

LIVERMORES

THE ESTATE AGENTS

2 Bedrooms

House - End Terrace

Offers In The Region Of

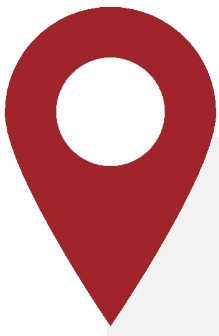
£350,000

Located in

Dartford



www.livermores.co.uk



21 Lordswood Close

Dartford Kent DA2 7LJ



Welcome to this charming end of terrace house located in the serene cul-de-sac of Lordswood Close, Dartford. This delightful home is perfect for a growing family or anyone seeking a peaceful retreat while still being close to local amenities.

The property boasts two generously sized double bedrooms, one of which features built-in wardrobes, providing ample storage space. The open-plan kitchen is bathed in natural light and includes a dining area, making it an ideal setting for entertaining friends and family. The bright and airy reception room offers a versatile living space, perfect for relaxation or social gatherings.

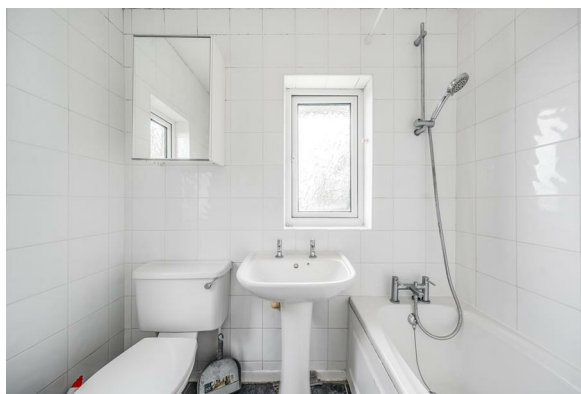
Step outside to discover a lovely garden that presents picturesque views, creating a tranquil environment for unwinding after a long day. Additionally, the property includes a conservatory, which adds further charm and functionality to the home.

Do not miss the chance to make this lovely house your new home, where you can enjoy the best of semi-rural living while being just a stone's throw away from the vibrant community of Dartford.



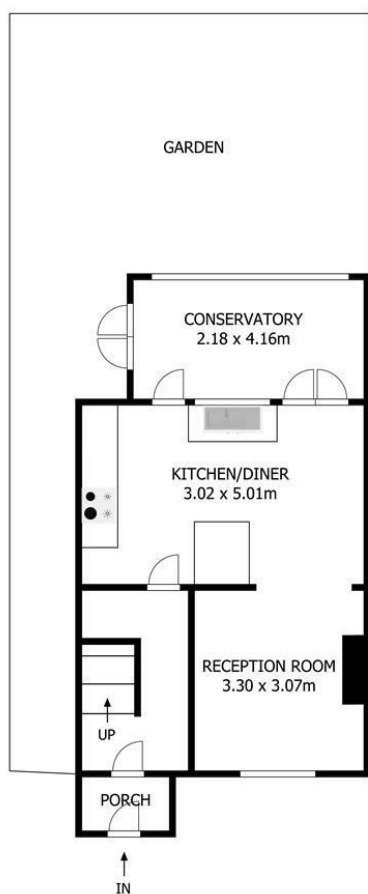
21 Lordswood Close

£350,000 Freehold



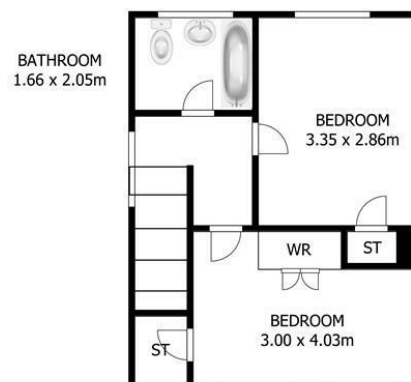
- OFFERS IN THE REGION OF £350,000
- TWO DOUBLE BEDROOMS
- FITTED KITCHEN DINER
- CONSERVATORY
- NO CHAIN!
- HARD STANDING TO FRONT
- GAS FIRED CENTRAL HEATING
- DOUBLE GLAZING
- SIMILAR PROPERTIES REQUIRED
- EPC C, COUNCIL TAX C





Ground Floor

Lordswood Cl, Dartford DA2 7LJ



First Floor

Council Tax Band C

Local Authority DARTFORD

Agents Note: Whilst every care has been taken to prepare these particulars, they are for guidance purposes only. All measurements are approximate and are for general guidance purposes only and whilst every care has been taken to ensure their accuracy, they should not be relied upon and potential buyers/tenants are advised to recheck the measurements.

| Energy Efficiency Rating | | |
|---|-------------------------|-----------|
| | Current | Potential |
| Very energy efficient - lower running costs | | |
| (92 plus) A | | |
| (81-91) B | | 86 |
| (69-80) C | 72 | |
| (55-68) D | | |
| (39-54) E | | |
| (21-38) F | | |
| (1-20) G | | |
| Not energy efficient - higher running costs | | |
| England & Wales | EU Directive 2002/91/EC | |

1 Hythe Street

Dartford

Kent

DA1 1BE

LIVERMORES
THE ESTATE AGENTS

dartford@livermores.co.uk

01322 228090

www.livermores.co.uk